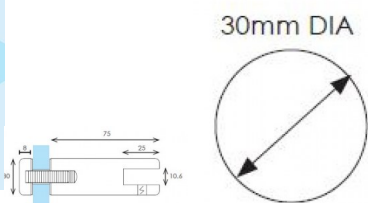
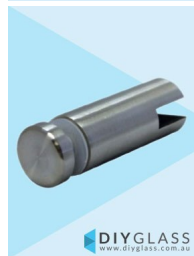


50x10mm Rail Connector for Glass Balustrade Offset Rail



50x10mm Rail Connector for Glass Offset Rail



- Joins 50x10mm Rectangle Tube to Glass
- 316 grade Stainless Steel
- Fit by Welding or epoxy glue
- Available in Mirror or satin finish

Rating: Not Rated Yet

Price

\$20.80

\$20.80

[Ask a question about this product](#)

Description

- Joins 50x10mm Rectangle Tube to Glass
- 316 grade Stainless Steel
- Fit by Welding or epoxy glue
- Available in Mirror or satin finish