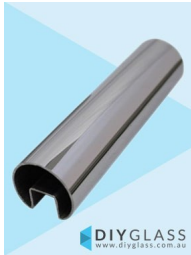


38mm 5800mm Long Slotted Round Tube for Glass Balustrade / Pool Fence Top Rail

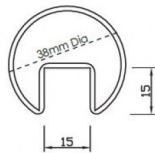


DIYGLASS
www.diyglass.com.au

38mm 5800mm Long Glass Top Rail Tube



DIYGLASS
www.diyglass.com.au



- 38mm 5800mm Long Slotted Tube
- Use for Glass Balustrade or Glass Pool Fence Top Rail
- Fits directly onto the top of the glass
- 316 grade Stainless Steel
- 15x15mm Slot
- Install with glazing rubber or silicon directly to the glass
- Available in Mirror or satin finish

Rating: Not Rated Yet

Price

\$214.00

\$214.00

[Ask a question about this product](#)

Description

- 38mm 5800mm Long Slotted Tube
- Use for Glass Balustrade or Glass Pool Fence Top Rail
- Fits directly onto the top of the glass
- 316 grade Stainless Steel
- 15x15mm Slot
- Install with glazing rubber or silicon directly to the glass
- Available in Mirror or satin finish

